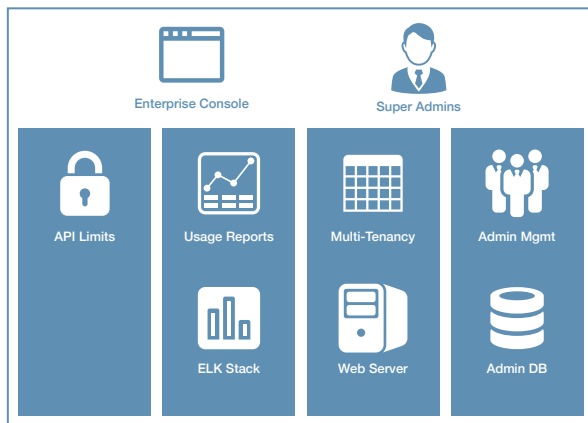




# DreamFactory Enterprise

DreamFactory Enterprise is a commercial software package for managing DreamFactory open source instances. DreamFactory Enterprise is a management platform that makes it easy to deploy, manage, and report on multiple instances of DreamFactory across your entire development lifecycle—development, QA, and production—all from one administrative application. With DreamFactory Enterprise, you can be confident that your DreamFactory deployments are fully managed, highly secure, compliant, and predictable in cost.

## DreamFactory Enterprise

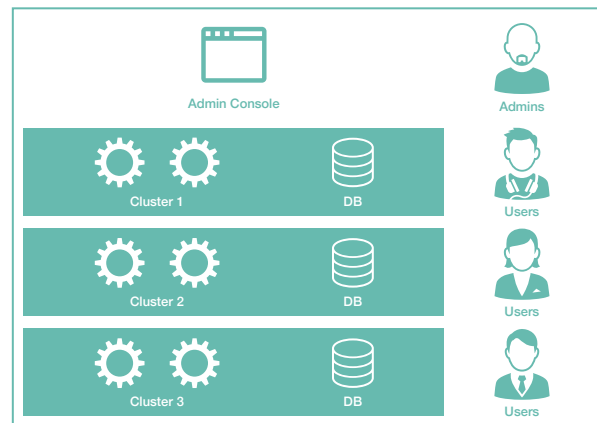


Manage any number of server clusters for hosting DreamFactory instances.

Log and report API call traffic by cluster, instance, application, end user, API endpoint, and more with the built-in ELK stack (Elasticsearch, Logstash, Kibana).

Centrally manage administrators for every DreamFactory instance.

## DreamFactory Instances

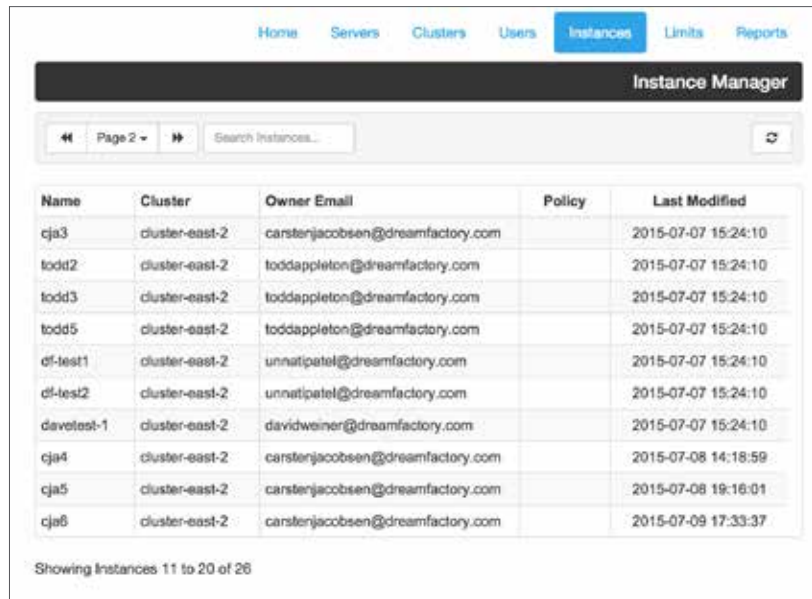


Deploy multiple DreamFactory instances on multi-tenant server clusters.

Configure API limit policies and throttle API calls for server clusters, DreamFactory instances, and end users.

# Centrally Manage Your DreamFactory Instances

Provision server clusters and DreamFactory instances in seconds. DreamFactory Enterprise allows you to run many DreamFactory instances on one cluster, reducing infrastructure costs and operational overhead. Managing DreamFactory instances across your development, test, and production environments is easy.



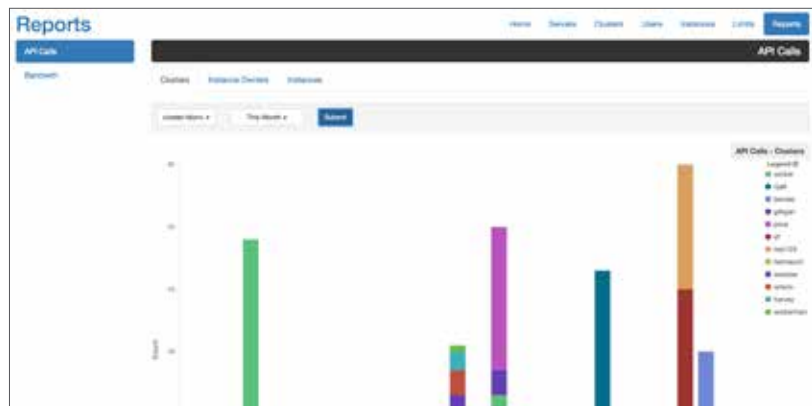
The screenshot shows the 'Instance Manager' interface with a table of instances. The table has columns for Name, Cluster, Owner Email, Policy, and Last Modified. The data is as follows:

Name	Cluster	Owner Email	Policy	Last Modified
cja3	cluster-east-2	carstenjacobsen@dreamfactory.com		2015-07-07 15:24:10
todd2	cluster-east-2	toddappleton@dreamfactory.com		2015-07-07 15:24:10
todd3	cluster-east-2	toddappleton@dreamfactory.com		2015-07-07 15:24:10
todd5	cluster-east-2	toddappleton@dreamfactory.com		2015-07-07 15:24:10
df-test1	cluster-east-2	unnatipatel@dreamfactory.com		2015-07-07 15:24:10
df-test2	cluster-east-2	unnatipatel@dreamfactory.com		2015-07-07 15:24:10
davotest-1	cluster-east-2	davidweiner@dreamfactory.com		2015-07-07 15:24:10
cja4	cluster-east-2	carstenjacobsen@dreamfactory.com		2015-07-08 14:18:59
cja5	cluster-east-2	carstenjacobsen@dreamfactory.com		2015-07-08 19:16:01
cja6	cluster-east-2	carstenjacobsen@dreamfactory.com		2015-07-09 17:33:37

Showing instances 11 to 20 of 26

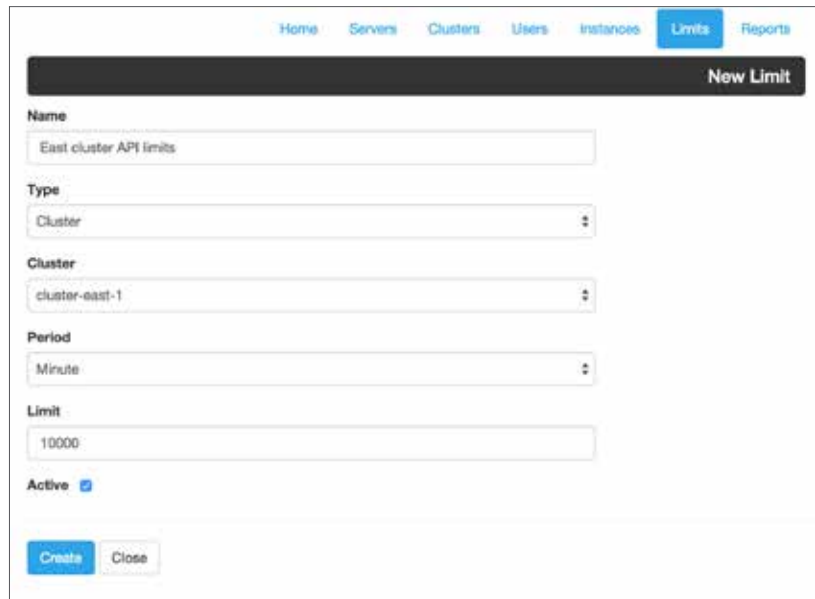
# Log and Report On Every API Call

DreamFactory Enterprise includes the popular ELK stack (Elasticsearch, Logstash, Kibana) for logging and reporting on every API call across every DreamFactory instance. Built-in dashboards make it easy to view API call traffic by server cluster, DreamFactory instance, application, end user, API endpoint, and more. Every API call is logged and you can easily add your own custom analytics using the Elasticsearch API.



# Manage API Limits

To control costs and defend against API attacks in production, it's important to enforce API call limits. DreamFactory Enterprise makes it simple to specify API limits for server clusters, DreamFactory instances, and end users. Each instance honors your API limits at runtime, enabling you to control costs and defend against attacks.



The screenshot shows a web interface for creating a new API limit. At the top, there is a navigation bar with links for Home, Servers, Clusters, Users, Instances, Limits, and Reports. The 'Limits' link is highlighted. Below the navigation bar is a dark header with the text 'New Limit'. The main form area contains the following fields:

- Name:** A text input field containing 'East cluster API limits'.
- Type:** A dropdown menu with 'Cluster' selected.
- Cluster:** A dropdown menu with 'cluster-east-1' selected.
- Period:** A dropdown menu with 'Minute' selected.
- Limit:** A text input field containing '10000'.
- Active:** A checkbox that is checked.

At the bottom of the form, there are two buttons: 'Create' (in blue) and 'Close' (in grey).